

Thank you for your interest in our yachts. We are pleased to present you the following yacht :

Lagoon 51 (2024)

Asking for price



Boat details

Manufacturer: Lagoon
Model: 51
Year of build: 2024
Length: 15,34 m
Asking for price

Cabins: 6
Berth: 6
Heads: 4
Fuel: Diesel
Draught: 1,37 m

Condition: new Existing yacht
Type: Multihull
Hull material: GFK (Fiberglass)
Drive: Sail-Drive
Width: 8,10 m

Located: Helsa, Germany
Boat-ID: 20231-21



Lagoon 51 (2024)

Asking for price

Description:

Fully equipped 6-cabin version of the LAGOON 51, delivery spring 2024.

General Information

YANMAR (Engine 1)

Typ: In board engine

Fuel: Diesel

Drive: Sail-Drive

Engine Power: 80 PS

YANMAR (Engine 2)

Typ: In board engine

Fuel: Diesel

Drive: Sail-Drive

Engine Power: 80 PS

Length over all: 15,34 m

Width: 8,10 m

Max. bridge clearance: 23,52 m

Draught: 1,37 m

Net. weight: 19,917 kg

Displacement: 12,152 kg

Fuel capacity: 2 x 519 l

Fresh water capacity: 829 l

Single berths: 2

Double berths: 4

Type: Multihull

Flag: Germany

Cabins: 6

Heads: 1

Tops/Hoods

Bimini Top

Lazy Bag

Lazy Jacks

Electric equipment

Shorepower connection

Generator

Inverter

Electrical bilge pump

Solar

Electronic equipment

Echolot / Depth sounder

Radar

Log/Speedometer

Wind speed / Wind direction

Chartplotter

Autopilot

Radio

Compass

GPS

Cockpit speaker

VHF



Interior

Microwave
Manuel bilge pumpe
Air condition
Heating
Electrical toilette
Hot water
Fridge
Freezer
Battery charger

Deck equipment

Teak-Cockpit
Teak side decks
Cockpit shower
Mounting for outboard engine
Davits
Radar reflector
Dinghy
Life raft
Cockpit pillows
Cockpit table
Bath ladder

Takelage

Steering wheel
Electric windlass

Sails

Full battend mainsail
Furling genua

Manufacturer's description

A CONVIVIAL SPACE

The Lagoon 51 has a flybridge that was optimized to cover 80% of its roof. Equipped with modular seating so you

can accommodate as many guests as you would like, this allows you to welcome them to the helm and relax

alongside the captain. A unique experience for your guests to enjoy.

With 2 large sunbathing pads in front of the helm station and a spacious C shaped seating area with a table that

can be lowered creating an XL sunbathing area, this gives you substantial space to accommodate all of your

guests with ease.

Two staircases lead to the flybridge aboard the 51 catamaran, one for the helmsman and one for the guests. This

double access allows for a great flow between living spaces on board, a common theme throughout the entirety of

the yacht.

Full headroom in the flybridge allows for this space to be safely appreciated at both anchor and underway.

Maneuvers are at hand from the steering station, while the guests can walk around without disturbing the

helmsman.

Discover a truly convivial and sociable space.



Equipment List

GENERAL LAYOUT:

- VERSION 6-CABIN, 4 HEADS

ELECTRICAL TENSION:

- Version 220 V 50 HZ

INTERIOR WOOD:

- STANDARD INTERIOR WOOD IN ALPI SAND OAK WITH DARK OAK FLOOR

SPECIFIC LAYOUTS:

- EXTRA FOR ADJUSTABLE WOODEN TABLE WITH ELECTRIC PEDESTAL
- BOW COMPARTMENTS LAYOUTS
- BERTH IN PORT BOW COMPARTMENT - ALPI WALNUT
- BERTH IN STARBOARD BOW COMPARTMENT - ALPI WALNU

EQUIPMENT:

COMFORT EQUIPMENT - 6-CABIN 4 HEADS VERSION

Electrical circuit with 60 Amp battery charger - Additional service batteries 3x140A AGM + battery controller - Monitoring display (Navicolor) - USB sockets in salon and cabins, Electrical manœuvre winch 50.2 STAEH - S/Steel dinghy hoist system & manual winch - Pulpits with wooden seats - Helm seat cushions- Wood passage way steps in lieu of standard composite - Port hole and window in aft cabins with blind - Fusion APOLLO MS-RA 670 + 6 loudspeakers in salon, cockpit and fly - 2 lifeline gates (1 portside and 1 starboard) - Lateral portholes in galley x 2 - Freshwater dock inlet - Deck wash pump sea water / fresh water - Fresh water electricaltoilets - 4-cabin 4 heads & 6-cabin versions - Fans in salon and cabins - Sea water electrical pump, with dedicated tap - Indirect lighting in cabins and salon ,Fridge 80L in aft cockpit - Deck courtesy lights in cockpit, transoms and flybridge - Windlass remote control at helm station with chain counter.

UPHOLSTERIES & CARPETS, STANDARD UPHOLSTERY DUNE (salon & settees), ADDITIONAL DUNE STOOL (per unit), ADDITIONAL DUNE STOOL (per unit), FITTED CARPET IN THE CABINS (Satino Romeo),CARPET IN THE SALON (Satino Romeo) - ADJUSTABLE TABLE, AFT & FORWARD COCKPITS, AFT COCKPIT CUSHIONS, FORWARD COCKPIT CUSHIONS, FLYBRIDGE CUSHIONS AND TABLE FOR FLYBRIDGE, SUNBATH CUSHIONS FOR FLYBRIDGE.

SAILS AND RIGGING

ALUMINIUM CANOE BOOM WITH WHITE PAINTED ALUMINIUM MAST AND COVER

ALL ELECTRICAL FLYBRIDGE WINCHES & HARKEN FLATWINDER IN LIEU OF STANDARD

CODE 0 RIG AND POLE & FURLER, CODE 0 RIG AND POLE & ELECTRIC FURLER, GENOA ELECTRIC FURLER

SQUARE TOP MAINSAIL AND GENOA, EXTRA FOR DOUBLE-PLY DACRON SQUARE TOP MAINSAIL AND GENOA IN LIEU OF STANDARD



DECK EQUIPMENT:

- EXTRA FOR TENDERLIFT HYDRAULIC PLATFORM WITH REMOTE (max 250Kg)
- OUTBOARD ENGINE BRACKET ON PUSHPIIT
- ADDITIONAL SWIM LADDER WITH 2nd HOT COCKPIT SHOWER
- FOLDING CARBON GANGPLANK 2,60m / 8,53ft WITH COVER + 2 SOCKETS
- 2 LED SPOT LIGHTS IN AFT BEAM
- 4 UNDER AFT BEAM W CAOTNERFI GSPUORTA TLIIOGNH T: SLOCKER AT PORTSIDE + SWIVELLING PLANCHA & GAS
- AFT BEAM CONFIGURATION : LOCKER AT PORTSIDE + SWIVELLING PLANCHA & GAS
- LOCKER AT STBD - EU
- ICE-MAKER 220V IN COCKPIT
- FORWARD & AFT COCKPIT AND TRANSOMS IN TEAK
- REMOVABLE COCKPIT BENCH WITH UPHOLSTERY (Color: Dark Grey)
- LARGE FOLDABLE WOODEN TABLE WITH COVER (Color: Graphite)
- 1 DIRECTOR CHAIR (Color: grey)
- COCKPIT SIDES AND AFT SUN CANVAS (Color: Graphite)
- SIDES AROUND AFT COCKPIT WITH WINDOWS (Color: Graphite)
- FORWARD CANVAS BIMINI (Color: Graphite)
- FLYBRIDGE COMPOSITE BIMINI WITH WINDOWS & WINDSCREEN (Color: Graphite)
- KIT OF COVERS - STEERING WHEEL & WHEEL STATION (Color: Graphite)
- SIDES AROUND COMPOSITE BIMINI WITH WINDOWS (Color: Graphite)

ENGINES:

- ELECTRONIC ENGINE THROTTLE AT HELM STATION
- ELECTRICAL BOW THRUSTER 24V 105KGF + BATTERIES (4x50Ah 750A) + 30A CHARGER AT PORTSIDE
- PAIR OF 3-BLADES FOLDING PROPELLERS

ELECTRICAL CIRCUIT:

- MASE GENSET 12,8Kva 220V / 50Hz
- INVERTER 12 / 220V - 2000VA
- SHAVER SOCKETS 220V IN HEADS - 4-CABIN 4 HEADS & 6-CABIN VERSIONS

WATER CIRCUIT:

- GREY WATER TANKS - 4&6-CABIN 4 HEADS VERSIONS NOT COMPATIBLE BATHROOM IN
- STBD BOW
- WATERMAKER 100L (26US Gal)/H 12/220V



INTERIOR EQUIPMENT:

- LARGE FORWARD ROOF WINDOW
- ADDITIONAL S/STEEL FRIDGE 130L / 34US Gal IN THE PASSAGE WAY
- FREEZER 100L / 26US Gal IN THE SALON
- PRE-FITTING MICROWAVE OVEN, PRE-FITTING WASHER / DRYER 220V
- CURTAINS ON SALON, SALON DOOR & AFT WINDOW
- ROLLER BLINDS IN THE CABINS UNDER BED SLATS, CRUISAIR REVERSE CYCLE AIR CONDITIONING 220V, ELECTRONIC, HIFI & VIDEO, COMMUNICATION
- 2023 RAYMARINE NAVIGATION PACK 14 400,00
- Europe Navionics card
- Rest of the World Navionics card
- US Navionics card
- RAYMARINE AXIOM + 12" DISPLAY AT NAV. STATION
- RAYMARINE QUANTUM 2 DOPPLER RADAR
- RAYMARINE AUTOPILOT REMOTE
- RAYMARINE REALVISION SOUNDER
- RAYMARINE CAMERAS
- WIRELESS HANDSET FOR RAYMARINE RAY90 VHF AT HELM STATION
- PRE-FITTING FOR TV 220V IN THE SALON
- DINGHY SET CL 340 WITH CONSOLE GREY WITH HONDA ENGINE BF20HP
- LAUNCHED, RIGGED, ANTIFOULING (4 dock lines, 6 fenders, diesel, anchor set)

OWNER'S MANUAL ENGLISH

The Company offers the details of this vessel in good faith but cannot guarantee or warrant the accuracy of this information nor warrant the condition of the vessel. A buyer should instruct his agents, or his surveyors, to investigate such details as the buyer desires validated. This vessel is offered subject to prior sale, price change, or withdrawal without notice



DISCLOSER: The company provides all information about this ship/boat in good faith



Contact:

Yachtbüro Grucza - Hamburg

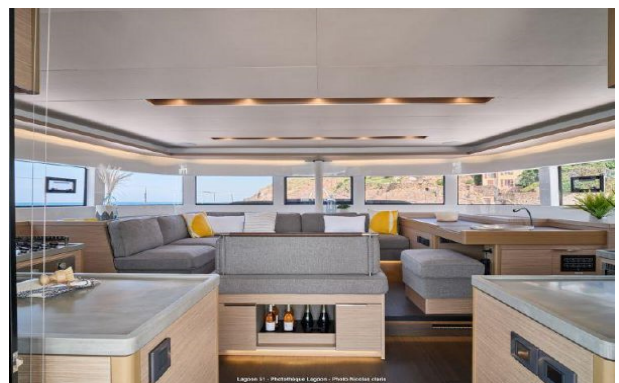
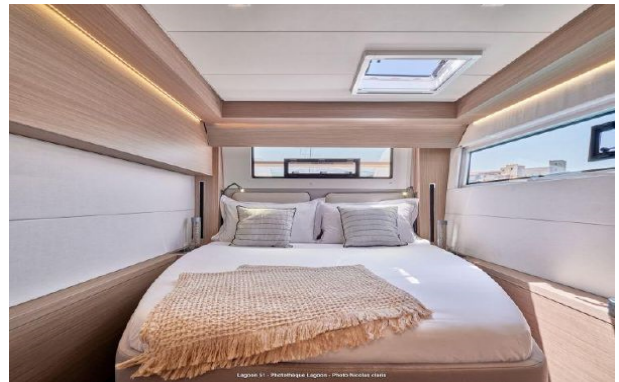
Email: info@yachtbuero-grucza.de

Mobile: +49 157 8509 9857

You will find more yachts here:

www.yachtbuero-grucza.de





Contact:

Yachtbüro Grucza - Hamburg

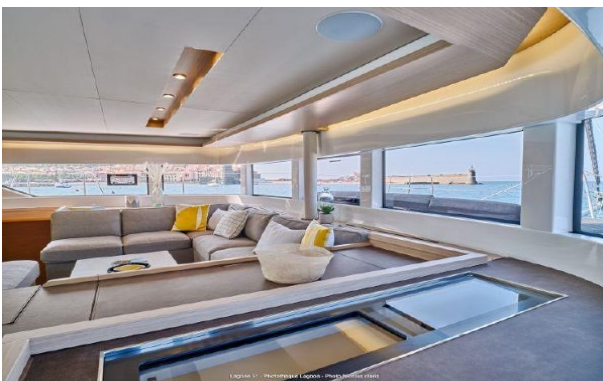
Email: info@yachtbuero-grucza.de

Mobile: +49 157 8509 9857

You will find more yachts here:

www.yachtbuero-grucza.de





Contact:

Yachtbüro Grucza - Hamburg

Email: info@yachtbuero-grucza.de

Mobile: +49 157 8509 9857

You will find more yachts here:

www.yachtbuero-grucza.de





Contact:

Yachtbüro Grucza - Hamburg

Email: info@yachtbuero-grucza.de

Mobile: +49 157 8509 9857

You will find more yachts here:
www.yachtbuero-grucza.de



Thanks to our many years of experience in various areas relating to yachts, both as yacht owners (experienced blue water sailors) and in the successful development and management of a large, international charter company, we can provide you with the best advice on the topics of yacht purchase, yacht sale and yacht investment/charter investment. We will be happy to answer your questions at any time.

Yours,

Jürgen
Grucza

Contact:

Yachtbüro Grucza - Hamburg

Email: info@yachtbuero-grucza.de

Mobile: +49 157 8509 9857

You will find more yachts here:
www.yachtbuero-grucza.de

