

Vielen Dank für Ihr Interesse an unseren Yachten. Gern präsentieren wir Ihnen folgende Yacht:

Lagoon 46 (2020)

855.000,- Euro



Boat details

Manufacturer: Lagoon
Model: Lagoon 46
Year of build: 2020
Legth: 13,99 m
Price: 855.000,-Euro

Cabins: 4
Berth: 8
Heads: 4
Fuel: Diesel
Draught: 1,30 m

Condition: used
Typ: Multihull
Hull material: GFK (Fiberglas)
Width: 7,96 m

Location: Spain (PG)
Boat-ID: 20231-32



Lagoon 46 (2020)

855.000,- Euro

Description:

New LAGOON 46, 4-cabin. Fully equipped with Fans in al cabins, portable Airconditioning, generator, water maker and much more. Please take a look at the extensive equipment list

General Information

Motor 1: YANMAR 4JH45
Typ: Innborder
Fuel: Diesel
Engine power: 45 Ps
Drive: Sail-Drive

Motor 2: YANMAR 4JH45
Typ: Innborder
Fuel: Diesel
Engine power: 45 PS
Drive: Sail-Drive

Length over all: 13,99 m
Width: 7,96 m
Draught: 1,30 m
Max. bridge clearance:

Fuel capacity:
Fresh water capacity:

Single berths:
Double berths: 4
Type: Multihull
Flag: Spain

Weight
Net. weight:

Cabins: 4
Heads: 4

Tops/Hoods

Bimini
Lazy Bag
Lazy Jacks

Electric equipment

Shorepower connection
Battery bank
Inverter
Electrical bilge pump
Generator
Air-Condition portable

Electronic equipment

Echolot
Navigations package B&G 2020 - B&G ZEUS 3
16" Display on Helm Station with Pod
Radar
Chartplotter
Autopilot (B&G)

TV
Radio
Compass
GPS
VHF
Cockpit-speaker



interior

Oven
Mikrowave
Watermaker
Ice-maker(Isotherm 230v-180W
Manuel Bilge pump
electrical Toilette
Air-Condition (portabel)
Hotwater
Fridge + Fridge 90L + Freezer 65L
Fresh Water-maker
Battery charger

Deck equipment

Cockpit Sink
Fridge (80L
Mounting for outboard engine
Davits
Radar reflector
Dinghy (Highfield C340 Honda Engine (20
hp inverter)
Life raft
Safety equipment for für 8 Persons
Underwater Spotlight (4)
Cockpit-Pillows
Cockpitt-Table
Canvas-Bimini
Bath ladder

Takelage

Steering wheel
Winch electrical

Sails

Mainsail
Genua

Manufacturer's description

The Lagoon 46 is ideal for long cruises. It is the first catamaran of its size to offer a flybridge as dedicated to easy handling as it is to relaxation, with its convertible sundecks and well-equipped helm station.



EQUIPMENT LIST

TECHNICAL ESPECIFICATIONS

LOA: 13,99 m / 45' 90" ft

BEAM: 7,96 m / 26' 12" ft

DRAFT: 1,30 m / 4' 47" ft

BASIC EQUIPMENT

- 4 Cabins
- 4 Heads

ENGINES

- Engines: 2x 45 HP Yanmar 4JH45
- Fuel: Diesel

EQUIPAMIENTO BASE

- 4 Cabinas
- 4 Baños

MOTORES

- Motores: 2x 45 HP Yanmar 4JH45
- Fuel: Diesel

Chasing your Dreams

INTERIOR EQUIPMENT - Interior Wood in Alpi Walnut with Asburgo Floor

- USB Sockets in Salon and Cabins (1 Doble module per cabin + 1 at salon chart table)

- Fans in Salon and Cabins - Freshwater Inlet - Portable Air Conditioning - Linen, Towels & Crockery - Water purifier.

ELECTRONIC EQUIPMENT- Navigation Pack B&G 2020 - B&G ZEUS 3 16" Display at Helm Station with Pod

- Europe Card - 2nd H50 Wireless Handset for VHF V90

ELECTRONIC EQUIPMENT- B&G Autopilot Remote (Essential

- Compulsory) AIS 500 B&G Transceiver

- with Antenna Coupling

- B&G Rudder Joystick at Nav. Station (Essential Compulsory) - Sounder B&G - Forward Scan - VHF B&G V90S Wired Single Handset - Radar

ELECTRICAL EQUIPMENT - Extra Fridge 90L and freezer 65L at

- starboard

- (drawers)

- USB Sockets in Salon and Cabins

- Chasing your Dreams

- catamaransbcn.com

ELECTRICAL EQUIPMENT- AGM Dual Batteries in Lieu of Acid

- Batteries

- Watermaker 100L (26US Gal)/H 12/220V - Quiet Flush Electrical Toilets- 4 -Cabin

- Version

- **COCKPITS, DECKS & FLYBRIDGE** - Deck Courtesy lights in Cockpit, Transoms

- and Flybridge

- Indirect lightning in Cabins and Salon - S/Steel Dinghy Hoist System& Manual

- Winch

- Electrical Manoeuvre Winch 50.2 STAEH



EQUIPMENT LIST

COCKPITS, DECKS & FLYBRIDGE |

- Aft Cockpit Cushions
- Forward Cockpit Cushions
- Sunbath Cushions with Lifting Backrest for Flybridge
- 4 Under Water Spot Lights
- Folding Carbon Gangplank 2,60m/8,53ft with Cover + 2 Sockets
- Sink in the Cockpit
- 12V Cockpit Fridge 80L/21US Gal
- Sides Around Aft Cockpit with Windows-Graphite
- Helm Station Canvas Bimini with Window & Windscreen Graphite
- 4 Under Water Spot Lights
- Special Upholstery PVC Snow White

| COCKPITS, DECKS & FLYBRIDGE |

- Folding Carbon Gangplank 2,60m/8,53ft with Cover + 2 Sockets
- 12V Cockpit Fridge 80L/21US Gal
- Sides Around Aft Cockpit with Windows-Graphite
- Helm Station Canvas Bimini with Window & Windscreen
- Dinghy Highfield 3.40, Honda Engine 20HP
- Inverter.
- Port Hole and Window in Aft Cabins with Blind
- Pulpits with Wooden Seats
- Fusion RA70N+ 6 Loudspeakers in Salon, Cockpit and Fly

| COCKPITS, DECKS & FLYBRIDGE |

- Larger teak cockpit table.
- Bathtub floor cover with imitation teak.
- Steering wheel covers and Ais.

| SAILS AND RIGGING |

- Lazy Bag for Standard Aluminium Boom-Graphite
- Extra for Dacron Square Top Mainsail in Lieu of Standard

SAFETY EQUIPMENT |

- Safety Box 8 Pax
- Lifteraft 8 Pax
- Tools Box 2 Pax
- Boat Care Box 2 Pax



DISCLOSER: The company provides all information about this ship/boat in good faith



Contact:

Yachtbüro Grucza - Hamburg

Email: info@yachtbuero-grucza.de

Mobile: +49 157 8509 9857

You will find more yachts here
www.yachtbuero-grucza.de





Contact:

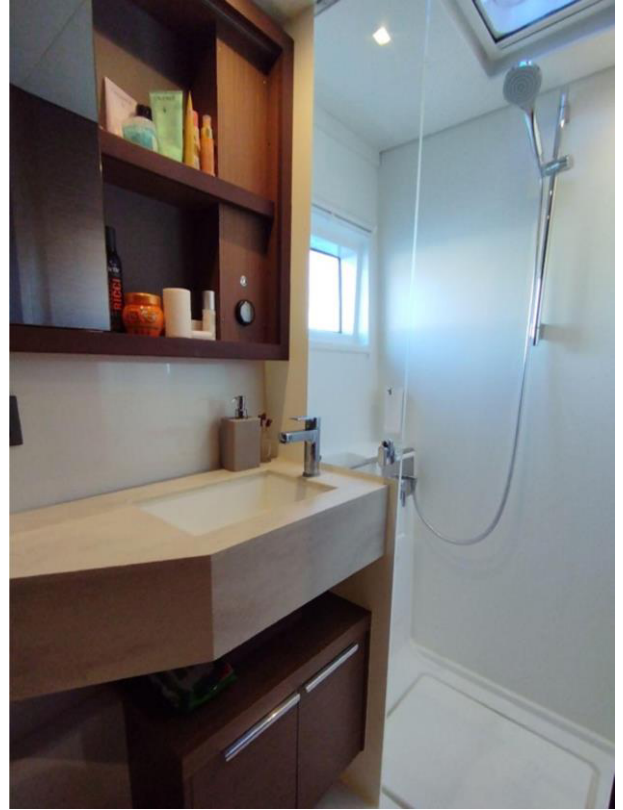
Yachtbüro Grucza - Hamburg

Email: info@yachtbuero-grucza.de

Mobile: +49 157 8509 9857

You will find more yachts here
www.yachtbuero-grucza.de





Contact:

Yachtbüro Grucza - Hamburg

Email: info@yachtbuero-grucza.de

Mobile: +49 157 8509 9857

You will find more yachts here
www.yachtbuero-grucza.de





Contact:

Yachtbüro Grucza - Hamburg

Email: info@yachtbuero-grucza.de

Mobile: +49 157 8509 9857

You will find more yachts here
www.yachtbuero-grucza.de





Thanks to our many years of experience in various areas relating to yachts, both as yacht owners (experienced blue water sailors) and in the successful development and management of a large, international charter company, we can provide you with the best advice on the topics of yacht purchase, yacht sale and yacht investment/charter investment. We will be happy to answer your questions at any time.

yours

*Jürgen
Grucza*

Contact:

Yachtbüro Grucza - Hamburg

Email: info@yachtbuero-grucza.de

Mobile: +49 157 8509 9857

You will find more yachts here
www.yachtbuero-grucza.de

